

CDS-John Blue Corner

Product Update: The CDS-John Blue VisaGage Orifice Selector now includes four orifice selector plates. The new plates have hole sizes that are spaced in-between the holes that are currently on plates A and B. The new plate part numbers are SMPT-0065C and SMPT-0065D. The new instruction manual and the orifice selector plate application chart are available at www.cds-johnblue.com.

Price Updates: Please note the updated list prices:

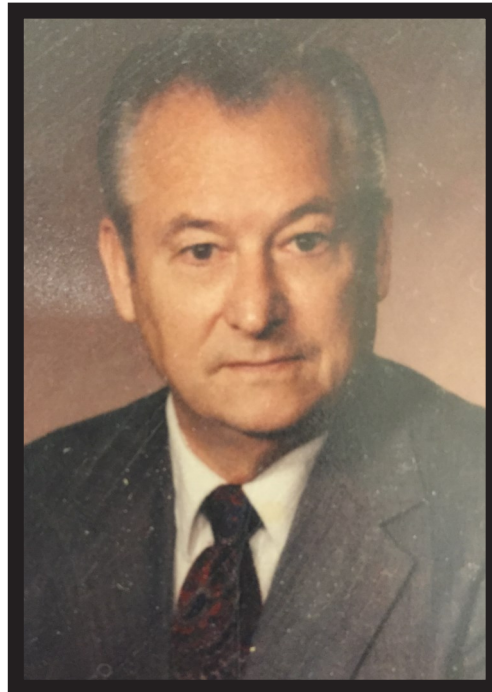
DP-43.1-GRIP	\$1149.43
DP-43.1-GRIP2.2	\$1149.43
DP-41990597	\$ 422.53
DP-63011032	\$ 424.00
DP-82407900	\$ 1.92

Farm Shows: It's time for the Farm Show Season. Contact the sales department for the most updated product catalogs and display options. Don't forget our competitively priced 3" Self-Priming Centrifugal Pumps w/13 HP Honda or Kohler engines, plus LBMS, Orifice Selectors and Direct Drive Hydraulic Piston Pumps.

(Continued on back)

In Memoriam

Ansil Edwin Poland



Ansil Edwin Poland, 87, passed away on Monday, October 3, 2016. Mr. Poland was the former President of John Blue Company from 1981-1998.

Mr. Poland began his career at John Blue Company in 1964. During his early years the company was known for quality manufacturing of liquid appli-

cator pumps in addition to self-propelled sprayers, dry, liquid and anhydrous ammonia applicators, liquid and anhydrous ammonia nurse units, cotton module makers, cotton wagons and even small tractors. With the changes in the agricultural economy in the mid-80's, he guided the company to devoting all of its resources to developing and building pumps, flow dividers, manifolds and accessories for applying liquid fertilizer and chemicals.

He is survived by his wife of 66 years, Lorraine; daughter, Lizabeth; son, Michael Poland, current Chief Operating Officer of CDS-John Blue Company, three grandchildren, six great-grandchildren, and one great-great grandchild.

Mr. Poland will be greatly missed by his family, friends and those he touched and helped throughout his life.

Christmas and New Year Holiday Schedule

CDS-John Blue Company will be closed **December 26-30** so our employees can enjoy this holiday season with their families. We will be resuming normal operations on **January 2**. We wish you and yours a safe and Merry Christmas and a Happy New Year. We appreciate your business throughout 2016 and look forward to working with you into 2017.

Continued from front

CDS-John Blue Corner

Price Updates: Please note the updated list prices:

SMPT-0029-04 \$4.89

Product Update: Effective immediately, gray balls will now be included with the Liquid Blockage Monitor System. They will complement the orange, yellow and green balls already included in the standard, premium and ISOBUS kits. To order gray balls separately the part number is: SMPT-0085.

Farm Shows: Stop by and see us at the following farm shows and see our new products:

- Iowa Power Show
- World Ag Expo
- National Farm Machinery Show
- Commodity Classic

CDS-John Blue Employee Anniversaries: Please join us in congratulating the following employees for reaching significant milestones at CDS-John Blue Company. We greatly appreciate their dedication and enthusiasm for their jobs. We wish them continued success for many years to come:

Steve Dudley—5 years

Marty Gray—15 years

Becky Phillips—15 years

Dustin Warren—15 years

Gary Young—25 years

Most people think Piston Pumps when they think CDS-John Blue Company. We now offer so much more, just take a look.

3" Self-Priming Wet Seal Centrifugal Pump with new Impeller Design: updated impeller means 75 gpm more flow at 30 psi. New impeller is used on 15 HP electric and 13 HP gasoline engines. Be sure

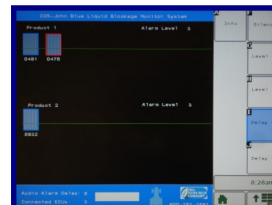
to check out our competitively priced 3" Self-Priming complete units: 13 HP Honda or 14 HP Kohler engines with base plates. Our Centrifugal Pumps can be run dry without damaging the seals, plus all are backed by a 2 Year Unconditional Warranty.

Diaphragm Spray Pumps: our diaphragm spray pumps are available from 4.3 to 68 gallons per minutes. We are the only company to offer patented poly diaphragm pumps, ideal for acid, chlorine and hard -to -

handle applications. Ask us about all the different poly models we have available.

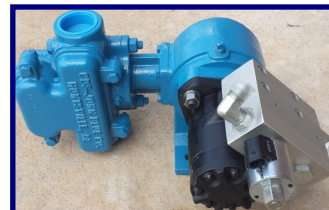
ISOBUS Compatible Liquid Blockage Monitor System (LBMS): Use your own

virtual terminal, including John Deere, with our ISOBUS compatible LBMS. Now you can detect low flow or a blocked line for both liquid fertilizer and NH₃. Stop guessing which line is plugged. Five display options are available: ISOBUS, wireless iPad, Android and Amazon Kindle and wired control panel.



Direct Hydraulic Drive Piston Pump: you

know the dependability of a piston pump. Now we offer direct hydraulic drive piston pumps that are lower cost and more compact for VR applications. Available in single piston and with flanges, double direct hydraulic drive piston pumps coming soon.



Time to Winterize Your Investments

What's the best way to keep your CDS-John Blue Products in peak performance? Winterization! Find out more by visiting our web site and checking out the short YouTube Videos for the various product lines: LBMS, VisaGage II Flow Monitors, NH₃ Impellicone, Flow Divider and Piston Pumps.

The CDS-John Blue web site: www.cds-johnblue.com is chock-full of information for you and your customers. Easy navigation allows you to obtain part numbers, product information, schematics and rate calculations to list just a few. Visit it today!

