

CDS-John Blue Corner

In Memoriam: Daniel L. Sharp (1979-2015) recently passed away in a tragic accident. Daniel worked as a Machinist at CDS-John Blue Company since 2013. Daniel comes from a long line of family members that have worked over the years at the company. Daniel is survived by his wife and two children. He will be deeply missed by his CDS-John Blue Family.

Price Updates: Please note the updated list prices:

DP-81291300	\$165.50
DP-81286800	\$165.00
SC-4200	\$151.55

NEW LBMS Flow Monitors and VisaGage II Calculators are available on the web site or on your mobile device. Simply answer a few questions to easily determine the most suitable ball to use in your VisaGage II or LBMS.

Holiday Schedule: CDS-John Blue Company will be closed December 24, 25 and January 1 for the holiday season. May you and yours have a safe and joyous holiday season, from your friends at CDS-John Blue Company.

(Continued on back panel)

3" Self Priming Centrifugal Pumps

Look What We Have Done

We have upgraded the **Impeller** on the CDS-John Blue 3" Self-Priming Centrifugal Pumps. That means 75 GPM more flow at 30 psi compared to the standard impeller. **Translation? That saves enough time, when filling to cover up to 45 more acres per day.** Capacity is greatly improved when pressure is applied. Additionally, your customers will get 20 GPM increase at open flow (0 back pressure) resulting in max flow of 327 GPM.

The new impellers will be used on all 15 HP electric and 13 HP gasoline 3" self-priming pumps. But we didn't stop there, we offer a direct replacement to our existing pumps, already in the field, on the following 3" Self-Priming Pumps:

SP-3320-BS

SP-3320-G13H

SP-3320-EX

SP-3320-E15TB

Only the American-made CDS-John Blue Centrifugal Pumps offer a **2-year unconditional warranty**, plus **flange models** are available. Our pumps can be run dry without damaging the seal, all at a competitive price.

If you haven't already switched your customers to the reliable, new and improved CDS-John Blue 3" Self-Priming Centrifugal Pumps give us a call today.



Are you planning to attend the World Ag Expo, National Farm Machinery Show or the Commodity Classic? If so, you'll want to be one of the first to see the **CDS-John Blue Next Generation Centrifugal Pump, limited Spring 2016 release.** Here are just a few features and benefits:

- Increased flow capacity.
- Manufactured with a new patent-pending inlet configuration.
- Design allows for easier maintenance and improved sealing.
- Competitively priced.



American Society of Agricultural And Biological Engineers (ASABE) Has Named CDS-John Blue Company Winner Of A 2016 AE50 Award

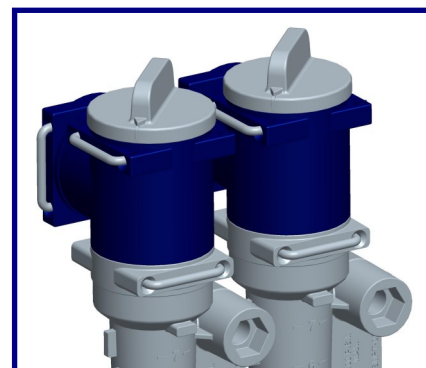
AE50 awards honor the year's most innovative designs in engineering products or systems for the food and agriculture industries. The CDS-John Blue VisaGage Orifice Selector will be featured in the January/February 2016 special AE50 issue of ASABE's magazine *Resource: Engineering & Technology for a Sustainable World*.

"We are pleased and honored to receive this award for the Orifice Selector, which expands and complements our VisaGage Flow Monitor.

Our goal at CDS-John Blue Company is to develop technology that can benefit our farmers to improve their crops and thus their profits. The Orifice Selector allows a grower to turn the CDS-John Blue VisaGage Flow Monitor into a self-contained orifice changing system. A grower can select from one of the four orifice setting on the two discs provided," said Jim Stubbs, CEO, CDS-John Blue Company.

Companies from around the world submit entries to the annual AE50 competition and up to 50 of the best products are chosen by a panel of

international engineering experts. The judges select products that will best advance engineering for the food and agriculture industries.



Continued from front

CDS-John Blue Corner

CDS-John Blue Employee Anniversaries: Please join us in congratulating the following employees for reaching significant mile-stones at CDS-John Blue Company. We greatly appreciate their dedication and enthusiasm for their jobs. We wish them continued success for many years to come!

10 years—Ricky Stapler

15 years—Diana Stubbs

15 years—Jim Stubbs

20 years—Jeff Ferguson

20 years—Mark Marquez

20 years—Vickie Thompson

How To Winterize Your Investments



Winterization of CDS-John Blue Products will help to keep them in peak performance for several years to come. Find out how? Learn more about the process in our short YouTube videos on our web site. We feature "How To" videos for the fol-

lowing products: CDS-John Blue Liquid Blockage Monitor System (LBMS), VisaGage II Flow Monitors, NH₃ Impellicone, Liquid Flow Divider and the NGP Piston Pumps.

The CDS-John Blue Web site is full of information for you and your growers. From product information, part numbers, schematics to rate calculators, plus a lot more, visit it today at www.cds-johnblue.com.