

CDS-John Blue Corner

Price Updates: Please note the updated list prices:

DRV-3300	\$1834.02
FM-901169	\$4.31
FM-901724	\$33.31
FM-901268	\$7.92
115796-01S	\$199.99

New CDS-John Blue App is now available from the Apple or Google Play Stores. The **CDS-John Blue Info Link** is a quick reference for product information including the pump calculator for squeeze and piston pumps, VisaGage II and LBMS ball calculator and orifice selector chart. Download your free app today.

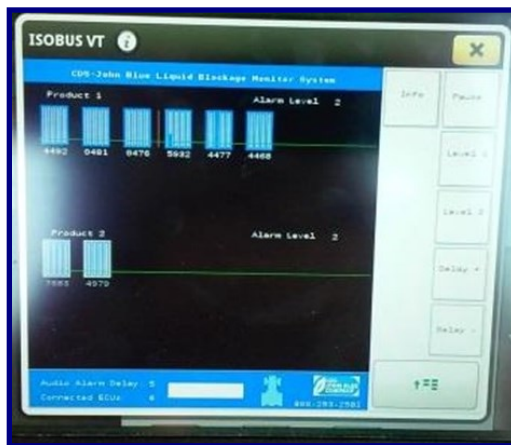
Push Connect Fittings are now available for **Delivery Line Check Valves** and **VisaGage II Flow Monitors**. The following sizes are available: 1/4", 3/8" and 5/16". See our web site: www.cds-johnblue.com for all the details.

Need a Part Number or Schematic—www.cds-johnblue.com has everything you and your customers need to get ready for spring—visit it today.

Limited 2016 Spring Release

2016 Newly Released Products

NEW ISOBUS Compatible Liquid Blockage Monitor System



You've asked, we have answered! CDS-John Blue Company continues to expand the Liquid Blockage Monitor System (LBMS). Now you can know your flow from your tractor cab using your own virtual terminal. The ISOBUS Compatible LBMS, **limited Spring 2016 release**, allows a grower to integrate into their own electronic system, display blockage information for both liquid and NH₃ while controlling the setting.

Two ISOBUS options are available:

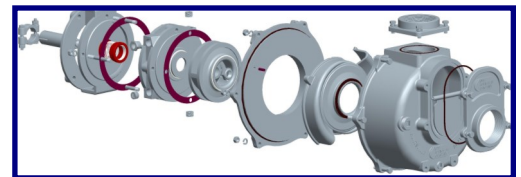
BM-08ISO—8 row kit for ISOBUS LBMS, universal connection (user must connect power and two can wires to their system by making their own splice harness / connections).

BM-08ISO-JD—8 row kit for John Deer Planters with ISOBUS, splice harness supplied for quick connection.

NEW Next Generation Self-Priming Centrifugal Pump= Greater Capacity

Not only did we recently upgrade the impeller to improve performance and blow past the competition, we just introduced a new inlet design. **The 2-in-1 Inlet Design** (patent pending) gives the grower flexibility to select from two inlet locations on one pump. The standard lower inlet with backflow valve, yields maximum pump flow. Or change to the higher inlet, which allows the outlet lines to drain after shutoff while retaining self-priming capability on start-up.

Plus improved technology allows us to now use o-rings instead of old gasket



technology, which makes pump maintenance easier.

Two new models are available **-limited 2016 spring release:**

New High Flow Model SP-3350—13 HP gasoline and 15 HP electric models, max capacity 400 gpm.

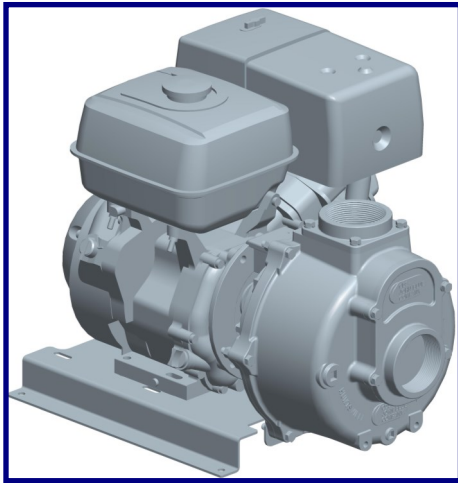
New Standard Model SP-3340—10 HP electric model, max capacity 340 gpm.

(Continued on back panel)

Continued From Front

2016 Newly Released Products

NEW Baseplates and Kits for 3" Self-priming 13 HP Centrifugal Pumps



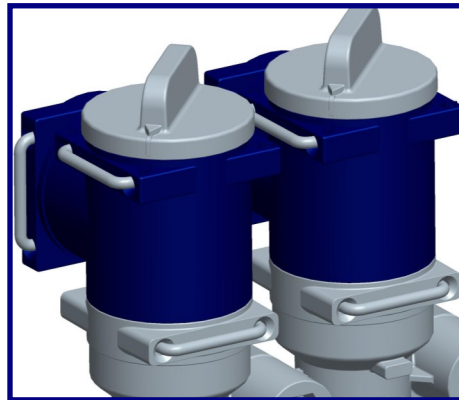
New 3" centrifugal pump baseplates are now available for customer supplied engines and motors. Below are the available baseplate kits:

Baseplate Kit for pump with 13 HP Honda Engine: 116230-91 includes baseplate and hardware, list price \$66.80.

Baseplates only are also available in bulk quantity and do not include the hardware. The list price is \$39.73 for part number 116228-01.

VisaGage Orifice Selector

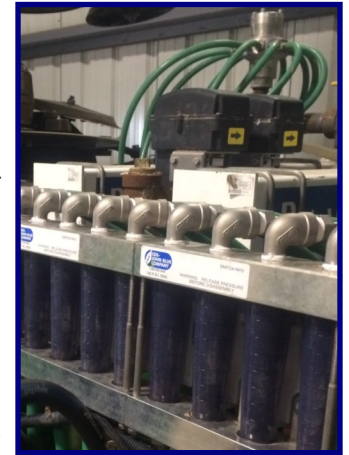
The 2016 AE50 award winning Orifice Selector is the first of its kind on the market today. Growers can turn their CDS-John Blue VisaGage II into a self-contained orifice changing system. Simply select from one of the four orifice settings on each disc, two discs are provided. No more getting wet from product when changing orifices. Adjustment is quicker, no need



to travel to each row unit and work with plumbing near the ground.

NH₃ VisaGage II with LBMS

Now you can know your NH₃ flow from the tractor cab and it's compatible with N-Serve. The CDS-John Blue LBMS shows both low and no-flow plus the premium system shows high flow. Correct problems immediately. Our patented LBMS is available in five control panel options for both NH₃ and liquid fertilizer: standard wired control panel, iPad, Android or Amazon Kindle wireless system or the newly released ISOBUS.



CDS-John Blue Announces New CEO and Staff Promotions



Effective February 1, Mike Bowman assumed the role of Chief Executive Officer. Former CEO, Jim Stubbs will serve on the Company's Board of Directors. Also announced were the following promotions: Jeff Ferguson, Director of Manufacturing, Craig Mashburn, Director of Sales and Jason Stewart, Director of Engineering. Pictured is the CDS-John Blue team at the recent NFMS in Louisville, KY (Pictured left to right) Jason Stewart, Mike Poland, Jim Stubbs, Mike Bowman, Corey Pedito, Ryne Gay and Craig Mashburn.