

## CDS-John Blue Corner

**Price Updates:** Please note the updated list prices.

- 114354-91 \$234.02
- 53-9012 \$1032.00
- FM-40 \$710.94
- FM-800028 \$33.33
- FM-901502 \$26.02
- S-3666-P \$6.61

**NEW App** from CDS-John Blue Company is now available from Apple App Store. The **CDS-John Blue info link** is a quick reference for product information, rate calculator for squeeze tube and piston pumps, orifice selector chart and all contact information. Download your free app today!

**Reminder** Push connect fittings are now available for the Delivery Line Repairable Check Valves and VisaGage II Flow Monitors. The following sizes are available: 1/4", 3/8" and 5/16". Visit our web site for more info.

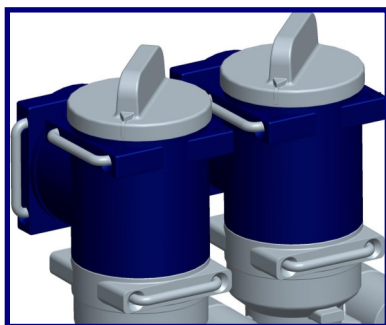
**Web Site:** Check out our newest product video from the 2015 National Farm Machinery Show. Available on our web site under product videos.

## Limited 2015 Spring Release

## 2015 Newly Released Products



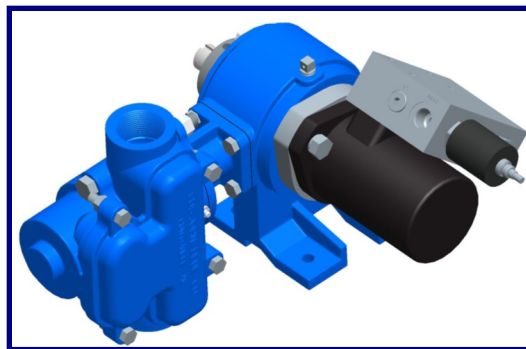
CDS-John Blue Company is continuing to expand the VisaGage and Liquid Blockage Monitor product lines. We now offer the **VisaGage II for NH<sub>3</sub> and N-Serve** (photo above). The new NH<sub>3</sub> VisaGage can be coupled to the patented Liquid Blockage Monitor System so you can know your NH<sub>3</sub> flow from the tractor cab. We offer three control options for both NH<sub>3</sub> and Liquid users, standard wired control panel, iPad or the **new** Android wireless system. The system shows both low and no-flow problems so you can correct them immediately. Plus the wireless systems shows high flow too.



Now you can turn your VisaGage II into a self-contained orifice changing

system with the **VisaGage Orifice Selector**. This patent-pending system is the first of its kind on the market today. Simply select from one of the four orifice settings on each disc. Two discs are provided for eight different options. The advantage to the CDS-John Blue Orifice Selector is that you won't get wet from fertilizers or chemicals when changing orifices. Adjustment is quicker and no need to travel to each row unit and work with plumbing near the ground.

The new **Direct Hydraulic Drive for Piston Pumps** is a lower cost and more compact solution for variable rate applications. Users can supply their own SAE A 2-bolt



motor. Or CDS-John Blue has a hydraulic motor/pwm manifold kit available, part number 116205-91. Drive Kits are available for John Deere®, Raven®, Ag Leader® and Dickey-john to name a few. Piston Pumps allow for quick and stable adjustments to applications rates, rates won't change with temperature or lack of head pressure, plus pump maintenance is minimal.

New and Improved

# Impeller Design on 3" Self-Priming Centrifugals

CDS-John Blue Company is pleased to announce significant changes to the 3" Self-Priming Centrifugal Pumps. The newly released centrifugal pump impeller has improved capacity when pressure is applied. For example, the new impeller will allow users to gain **75 GPM more flow at 30 psi compared to the standard impeller.** (See for yourself -chart below.) At open flow (0 back pressure) users will realize a 20 GPM increase resulting in a maximum flow rate of

327 GPM. Additionally the new impeller design sustains a high shut-off head of 67 psi.

The new CDS-John Blue Impeller will be used on the popular 15 HP electric and 13 HP gasoline engine 3" self-priming pumps. The new impeller is a direct replacement to current impellers on 3" Self-Priming Pumps: SP-3320-BS, SP-3320-G13, SP-3320-EX and SP-3320-E15TB.

Additionally a shipping plug has been added to our complete line of centrifugal pumps, which will help to stop the pump boxes from getting wet during shipping. A new 1" NPT Port Hole for a pressurized rinse option has been added to all 3" self-priming pumps.

All CDS-John Blue Centrifugal Pumps are backed by a 2-year unconditional warranty.

### 3" Self-Priming Impeller Comparison

