

**Special points of interest:**

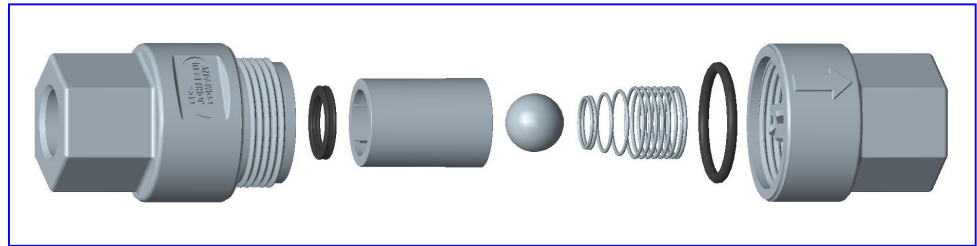
- The early order packets have been mailed.
- Don't forget Oct. 31 is the deadline for the early order program and your additional discount.

## CDS-John Blue 125th Anniversary Feature

Congratulations to Randy White, Newton Crouch -FL, winner of the 3rd 125th Anniversary Contest. Randy answered correctly the question "What year was John Blue sold and to whom." The answer 1967 to STV, New York.

This issue's question is: **"What year did CDS Ag Industries and John Blue Company join forces?"** The correct answers received by October 1 will be entered into a drawing to win an \$125 gift card. Contact the sales department at 1-800-253-2583 with the correct answer and be eligible to win \$125!

# NEW! CDS-John Blue 125th Anniversary Product Line-up



### NEW! Delivery Line Check Valve for Planters and Applicators

**FEATURES:**

- All Viton seals.
- 316 SS spring and ball.
- 1 psi spring standard.
- Polypropylene glass-reinforced.
- Easy to clean.
- Repairable and easier to service in

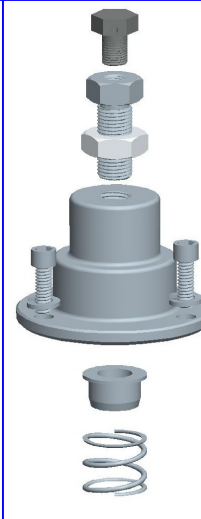
the field.

**Part Number: CV-1101**, Poly Check Valve, 1/4" NPT Female Inlet and Outlet. Various hose barbs and 3 psi springs are also available, contact the sales department.



### NEW! Flow Divider FEATURES:

- Introducing 6-outlet flow divider—FD-0610.
- Newly revised flow dividers: FD-1210 and FD-2010.
- Improved accuracy at lower application rates.
- Spherical designed needle tip has better impact resistance.
- Added wrench flats for ease of installation.



### NEW! Flow Divider Adjustable Spring Kit FEATURES:

- Adjustable spring kit for adjusting multiple flow dividers.
- Kit may be purchased separately or pre-installed on any size flow divider.

**Part Number: add-adj** after any flow divider to order from the factory.

**Retrofit kits:** 116063 for FD-0610, 116064 for FD-1210 and 116065 for FD-2010. (More new product on back.)

**CDS-John Blue Corner**

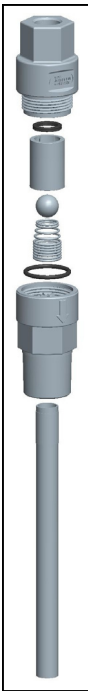
**12-Volt Pumps:**

The 12-volt pumps now have a one-year warranty.



# More 125th Anniversary New Products

**NEW! Poly Injection Check Valve for Irrigation**  
**FEATURES:**

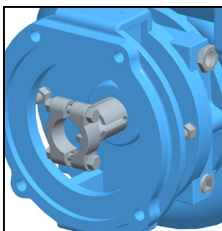


- 200 gph maximum capacity continuous flow (Duplex).
- 100 gph maximum capacity (Simplex).
- Glass-reinforced polypropylene body, all Viton seals and 316 stainless steel spring, ball and injection tube.
- 10 psi spring.
- More uniform distribution of product.
- Prevents back-flow of product.

**NEW! Centrifugal Pump Products**

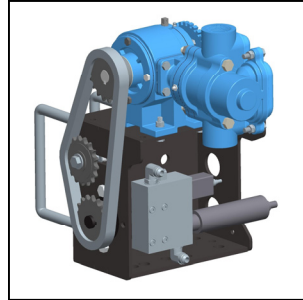
**Keyed Shaft Clamp**

for gasoline engines to prevent shaft slippage.



- **LCT Engines** are available in 5 HP recoil start and 13 HP electric start—all with a 2 year warranty.

**NEW! Variable Rate Hydraulic Drive Kit for John Deere GreenStar™**  
**FEATURES:**



- Base Kit to add variable rate capacity to a piston pump for GreenStar.
- 2 types of flow control valves (servo or PWM).
- Existing pump can be easily converted to VR.
- Hydraulic 2-way bypass valve turns pump and liquid flow on and off.

- Piston pump allows for quick and stable adjustment to application rates.
- With a piston pump your application rates won't change with the temperature.
- Piston pump creates greater suction allowing for uniform application.

**Part Number:**

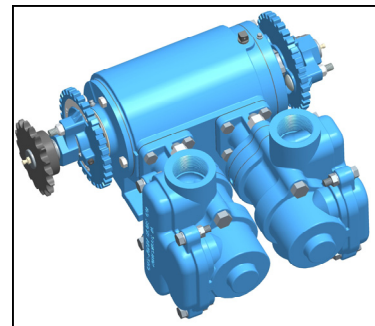
**VRH-JD-10**, Variable rate kit for John Deere GS2 and GS3.

**VRH-MAN-10**, Non-variable rate speed control system.

**Coming soon! Additional variable rate hydraulic drive kits for other systems!**

**NEW! Dual Adjustable NGP-8055-AR**  
**FEATURES:**

- Apply 2 products with 1 piston pump.
- Use only 1 drive system.
- Independently adjustable stroke.
- 5 to 1 max ratio between pumping heads.
- Available with ground drive or run hydraulically with VR.
- Ideal for starter fertilizer on 1 side and nitrogen on the other side. For example: 5 GPA starter and 5-25 GPA NPK or 7 GPA starter and 7-35 GPA NPK.



- Double acting piston pump.
- Variable stroke.
- Rated Flow 42 GPM total, 21 GPM per

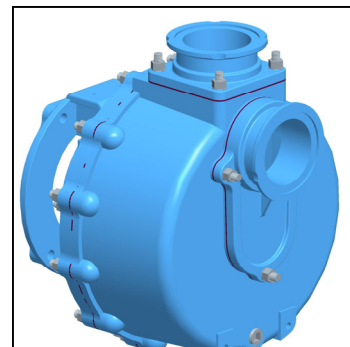
side.

- Rated pressure—120 psi.
- Rated speed—450 rpm maximum.
- Inlet—1 1/2 FPT, Outlet 1 1/2" FPT

**Part Number: NGP-8055-AR**

**NEW! Centrifugal Pump Flanges**  
**FEATURES:**

- Eliminate leaks with flanged fittings.
- Easier to plumb your system, can replace existing threaded fittings in your plumbing system.
- Cast iron flanges available for all 2" and 3" centrifugal pumps.
- Replacement inlet and outlet flanges. 2-year unconditional warranty.



**Part Number for Centrifugal Pumps with Flanges: Add -FLG after model part number**